

NATURAL LIGHT ENERGY SYSTEMS, dba KENNEDY SKYLIGHTS

MODEL "SFG4" CURB MOUNTED SELF-FLASHING GLASS SKYLIGHT - NI

INSTALLATION ANCHORAGE DETAILS

GENERAL NOTES:

1. THE PRODUCT ANCHORAGE SHOWN HEREIN IS DESIGNED TO COMPLY WITH THE REQUIREMENTS OF THE CURRENT EDITION OF THE FLORIDA BUILDING CODE - BUILDING (FBC) AND RESIDENTIAL (FRC) VOLUMES EXCLUDING THE HIGH VELOCITY HURRICANE ZONE (HVHZ) AT THE DESIGN PRESSURE(S) STATED HEREIN.
2. THE PRODUCT DETAILS CONTAINED HEREIN ARE BASED UPON SIGNED AND SEALED TEST REPORTS # NCTL-210-3012-1 AND ASSOCIATED LABORATORY STAMPED DRAWINGS.
3. THE SKYLIGHT HAS BEEN TESTED IN ACCORDANCE WITH THE REQUIREMENTS OF THE CURRENT EDITION OF THE FLORIDA BUILDING CODE - BUILDING (FBC) AND RESIDENTIAL (FRC) VOLUMES EXCLUDING THE HIGH VELOCITY HURRICANE ZONE (HVHZ) AND DOCUMENTED IN SIGNED AND SEALED TEST REPORT NO. NCTL-210-3012-1 AND ASSOCIATED LABORATORY STAMPED DRAWINGS.
4. GLASS MEETS THE REQUIREMENTS OF ASTM E1300-12AE1. SEE SHEET 4 FOR GLAZING DETAILS.
5. ADEQUACY OF THE EXISTING STRUCTURAL FRAMING AS A MAIN WIND FORCE RESISTING SYSTEM CAPABLE OF WITHSTANDING AND TRANSFERRING APPLIED PRODUCT LOADS TO THE STRUCTURE IS THE RESPONSIBILITY OF THE ENGINEER OR ARCHITECT OF RECORD.
6. SITE CONDITIONS THAT DEVIATE FROM THE DETAILS OF THIS DRAWING REQUIRE FURTHER ENGINEERING ANALYSIS BY A LICENSED PROFESSIONAL ENGINEER OR REGISTERED ARCHITECT.
7. IN NON-HVHZ AREAS WHERE WINDBORNE DEBRIS PROTECTION REQUIREMENTS EXIST, USE OF AN IMPACT PROTECTIVE SYSTEM COMPLYING WITH THE FBC REQUIREMENTS FOR WINDBORNE DEBRIS REGIONS IS REQUIRED FOR THE PRODUCT(S) HEREIN.
8. WHEN APPLICABLE, DISSIMILAR METALS INCLUDING FASTENERS THAT MAY COME INTO CONTACT WITH ALUMINUM SKYLIGHT FRAMING SHALL HAVE BEEN PROTECTED IN A MANNER TO PREVENT GALVANIC CORROSION. FASTENERS SHALL BE MADE OF CORROSION RESISTANT METAL OR HAVE A CORROSION RESISTANT COATING.
9. CURB CONSTRUCTION AND MOUNTING DETAILS:
 - 9.1. A CURB SUPPLIED BY OTHERS CONSTRUCTED AND MOUNTED IN ACCORDANCE WITH THE REQUIREMENTS OF THE CURRENT EDITION OF THE FLORIDA BUILDING CODE - BUILDING (FBC) AND RESIDENTIAL (FRC) VOLUMES FOR THE TYPE OF CONSTRUCTION CLASSIFICATION WHERE THE SKYLIGHT IS TO BE INSTALLED IS ALLOWED.
 - 9.2. INTEGRATION WITH THE ROOF ASSEMBLY SHALL BE IN ACCORDANCE WITH CHAPTER 15 OF THE CURRENT EDITION OF THE FBC AND CHAPTER 9 OF THE CURRENT EDITION OF THE FRC.
 - 9.3. ADDITIONAL INSTALLATION DETAILING AND ENGINEERED INSTALLATION EVALUATION BY A LICENSED DESIGN PROFESSIONAL WILL BE REQUIRED FOR SUBMITTAL IN ADDITION TO THIS PRODUCT EVALUATION DOCUMENT.

DESIGN PRESSURE RATING (PSF)	IMPACT RATING
+60.0/-60.0	NON-IMPACT

TABLE OF CONTENT	
SHEET	DESCRIPTION
1	GENERAL NOTES AND DESIGN PRESSURE RATING
2	INSTALLATION NOTES AND ANCHOR SCHEDULE
3	ELEVATION AND ANCHORING LAYOUT
4	INSTALLATIOIN SECTION WITH SCREWS AND GLAZING DETAIL
5	INSTALLATION SECTION WITH NAILS
6	BILL OF MATERIALS AND COMPONENTS

PROJECT NUMBER: 423-0504	
D	Update to 8th Edition (2023) FBC RJA 10/16/23
C	UPDATE CONDENSATION CHANNEL (ITEM NO. 8) RJA 12/14/19
B	Update to 6th Edition (2017) FBC RJA 12/6/17
A	Update to 5th Edition (2014) FBC RJA 7/15/15
REV	DESCRIPTION DATE
BY	

NATURAL LIGHT ENERGY SYSTEMS, dba KENNEDY SKYLIGHTS
5294 TOWER WAY
SANFORD, FL 32773

TITLE: MODEL "SFG4" CURB MOUNTED GLASS SKYLIGHT
NON-IMPACT
GENERAL NOTES AND DESIGN PRESSURE RATING

DRAWN BY: TJH
DATE: 05/08/12
SCALE: N.T.S.
REV: D

DRAWING NO: KENN0005
SHEET: 1 OF 6

PREPARED BY: PTE
PTC PRODUCT DESIGN GROUP, LLC
PO BOX 520776
LONGWOOD, FLORIDA 32752
Phone: 321.690.1788
Fax: 321.690.1789
Email: info@ptc-corp.com
FBPE CA. NO. 23535

Robert J. Amoruso, P.E.
FL P.E. No. 49752

INSTALLATION NOTES:

1. ANCHOR INSTALLATION:
 - 1.1. INSTALL CURB TO ROOF ASSEMBLY IN ACCORDANCE WITH THE ANCHORING LAYOUT ELEVATIONS SHOWN ON SHEET 3 USING FASTENERS SHOWN IN THE INSTALLATION ANCHOR SCHEDULE ON THIS SHEET.
 - 1.2. INSTALL SASH TO CURB USING #8 SELF-DRILLING/SELF-TAPPING SCREWS. SEE ANCHORING LAYOUT SHEET 3.
 - 1.3. CURB WOOD SPECIFIC GRAVITY OF 0.55 MINIMUM.
2. APPLY ALL SEALANTS ACCORDING TO MANUFACTURERS INSTRUCTIONS.
3. PRODUCT ANCHORS SHALL BE AS DESIGNATED AND LOCATED AS SHOWN ON THE INSTALLATION DRAWINGS. ANCHOR EMBEDMENT AND EDGE DISTANCE EXCLUDE WALL FINISHES INCLUDING, BUT NOT LIMITED TO SHEATHING, UNDERLAYMENT AND SHINGLES.
4. INSTALLATION ANCHORS AND ASSOCIATED HARDWARE MUST BE MADE OF CORROSION RESISTANT MATERIAL OR HAVE A CORROSION RESISTANT COATING. DISSIMILAR METALS OR MATERIALS IN CONTACT WITH PRESSURE TREATED WOOD MUST BE PROTECTED TO PREVENT REACTION.
5. INSTALLATION ANCHORS SHALL BE INSTALLED IN ACCORDANCE WITH ANCHOR MANUFACTURER'S INSTALLATION INSTRUCTIONS. ANCHORS SHALL NOT BE USED IN SUBSTRATES WITH STRENGTHS LESS THAN THE MINIMUM STRENGTH SPECIFIED IN THE INSTALLATION ANCHOR SCHEDULE ON THIS SHEET.
6. FOR SKYLIGHT SIZES LESS THAN THAT SHOWN IN THE ELEVATIONS, ANCHOR QUANTITIES MAY BE REDUCED BY ONE (1) WHEN SPACING BETWEEN ANCHORS IS 50% OR LESS THAN THE MAXIMUM SPACING REQUIRED.

INSTALLATION ANCHOR SCHEDULE								
ASSEMBLY	SUBSTRATE TYPE	HEAD TYPE	SIZE	MANUFACTURER AND/OR SPECIFICATION	MIN. EMBEDMENT (IN)	MIN. EDGE DISTANCE (IN)	MIN. SPACING (IN)	CAPACITIES BASED ON
CURB	SOLID-SAWN LUMBER (1)	HEX, PAN OR TRUSS HEAD	NO. 8	ASME B18.6.4 (SELF-DRILLING/SELF-TAPPING SCREW)	1	5/8	5/8	WOOD WITH A MINIMUM SPECIFIC GRAVITY OF 0.55
ROOF	CONCRETE	HEX HEAD	3/16"	ITW TAPCON (3)	1 1/2	1 1/8	2 1/2	MIN. 2500 PSI CONCRETE BUT NOT LESS THAN THAT REQUIRED BY BUILDING CODE
				Elco Ultracon	1 3/8	1	3 3/8	MIN. 2500 PSI CONCRETE BUT NOT LESS THAN THAT REQUIRED BY BUILDING CODE
ROOF	SOLID-SAWN LUMBER (2)	HEX, PAN OR TRUSS HEAD	NO. 8	ANSI B18.6.1 (WOOD SCREW) ASME B18.6.4 (SELF-DRILLING/SELF-TAPPING SCREW)	7/8	5/16	13/16	WOOD WITH A MINIMUM SPECIFIC GRAVITY OF 0.55
ROOF	SOLID-SAWN LUMBER	1/4" DIA. ROUND HEAD RING-SHANK NAIL	0.099" DIA. MIN.	RING-SHANK NAIL	7/8	1/2	1/2	WOOD WITH A MINIMUM SPECIFIC GRAVITY OF 0.55
ROOF	ALUMINUM OR STEEL, 1/8" MIN. WALL THICKNESS	HEX, PAN OR TRUSS HEAD	NO. 8	ASME B18.6.4 (SELF-DRILLING/SELF-TAPPING SCREW)	PROTRUDING MIN. 3 THREADS PAST INTERIOR OF SUBSTRATE	1/2	1/2	ULTIMATE STRENGTH (Fu) OF 22,000 PSI
ROOF	PLYWOOD or OSB	HEX, PAN OR TRUSS HEAD	NO. 8	ASME B18.6.4 (TYPE AB TAPPING SCREW)	SCREW THREADS SHALL PROTRUDE A MINIMUM OF 1/4" FROM THE UNDERSIDE OF THE ROOF SHEATHING	1/2	1/2	7/16" THICK PLYWOOD - SPECIES GROUP 1 OR 2 (APA VOLUNTARY PRODUCT STANDARD PS 1) MINIMUM OR
ROOF	PLYWOOD or OSB	1/4" DIA. ROUND HEAD RING-SHANK NAIL	0.099" DIA. MIN.	RING-SHANK NAIL	NAIL SHANK SHALL PROTRUDE A MINIMUM OF 1/4" FROM THE UNDERSIDE OF THE ROOF SHEATHING	1/2	1/2	7/16" - SHEATHING GRADE (APA VOLUNTARY PRODUCT STANDARD PS 2) MINIMUM

NOTES:

- 1) FOR NO. 8 WOOD AND TAPPING SCREWS IF SPLITTING IS A CONCERN, DRILL 0.102" (DRILL SIZE 38) PILOT HOLE FOR WOOD FRAME INSTALLATION.
- 2) FOR NO. 8 WOOD AND TAPPING SCREWS IF SPLITTING IS A CONCERN, DRILL 0.082" (DRILL SIZE 45) PILOT HOLE FOR WOOD FRAME INSTALLATION.
- 3) WHEN ITW TAPCONS ARE USED FOR CONCRETE/MASONRY INSTALLATION, THEY SHALL BE THE ADVANCED THREADFORM TECHNOLOGY TYPE.

PROJECT NUMBER: 423-0504		RJA	BY
		10/16/23	DATE
	D	Update to 8th Edition (2023) FBC	DESCRIPTION
	C	UPDATE CONDENSATION CHANNEL (ITEM NO. 8)	REV
	B	Update to 6th Edition (2017) FBC	

NATURAL LIGHT ENERGY SYSTEMS, dba KENNEDY SKYLIGHTS
 5294 TOWER WAY
 SANFORD, FL 32773

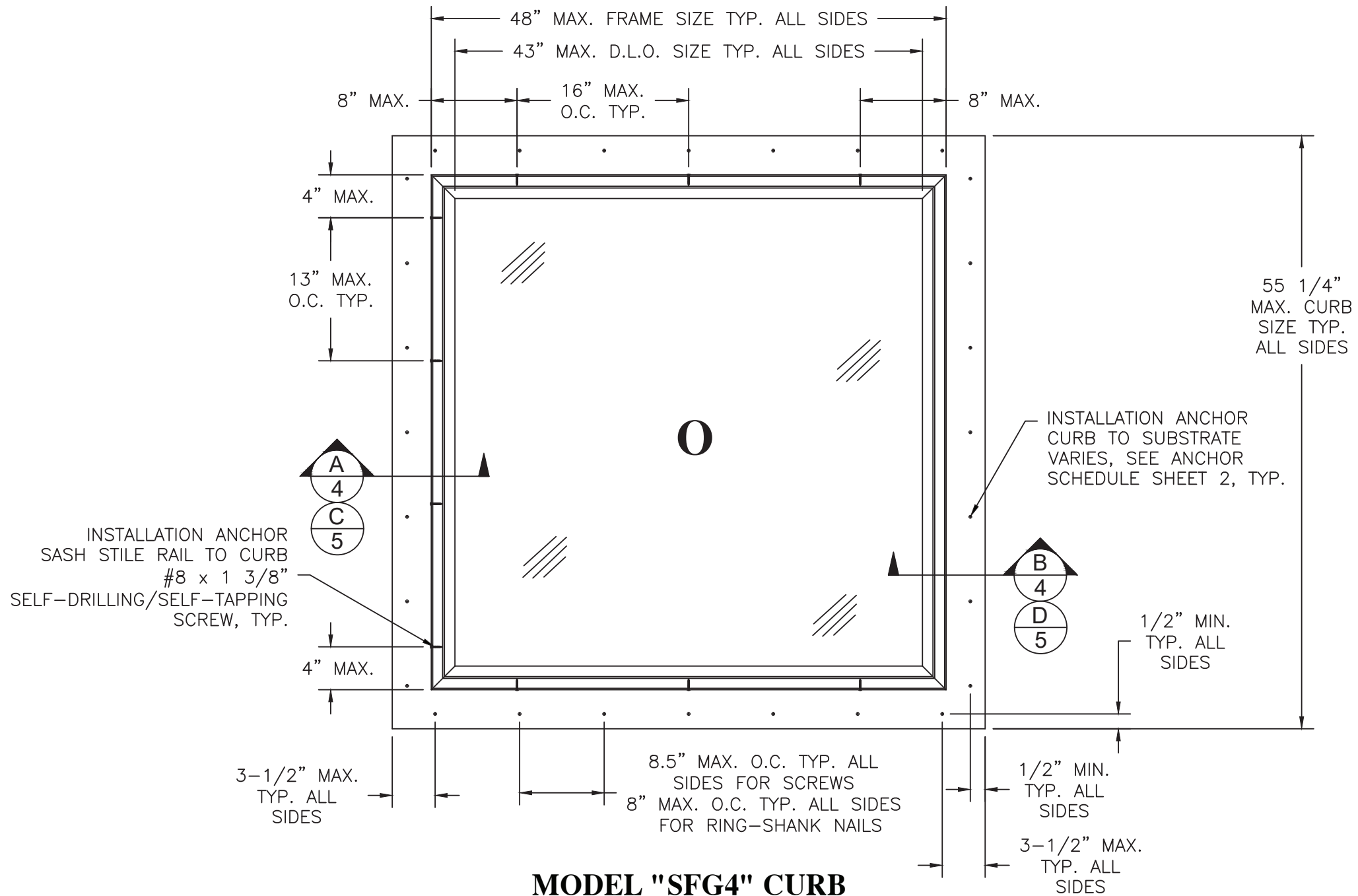
TITLE: MODEL "SFG4" CURB MOUNTED GLASS SKYLIGHT NON-IMPACT
 INSTALLATION NOTES AND ANCHOR SCHEDULE

DATE: 05/08/12
 DRAWING NO: KENN0005
 SHEET: 2 OF 6

PREPARED BY: T.J.H.
 SCALE: N.T.S.
 REV: D

PTC PRODUCT DESIGN GROUP, LLC
 PO BOX 520776 Phone: 321.690.1789
 LONGWOOD, FLORIDA 32752 Fax: 321.690.1789
 FBPE C.A. NO. 23535 Email: info@ptc-corp.com

Robert J. Amoruso, P.E.
 FL P.E. No. 49752



**MODEL "SFG4" CURB
MOUNTED SKYLIGHT**

INSTALLED INTO VARIABLE SUBSTRATE ROOF ASSEMBLIES
(SEE INSTALLATION ANCHOR SCHEDULE - SHEET 2)
EXTERIOR VIEW

NATURAL LIGHT ENERGY SYSTEMS, dba KENNEDY SKYLIGHTS
5294 TOWER WAY
SANFORD, FL 32773

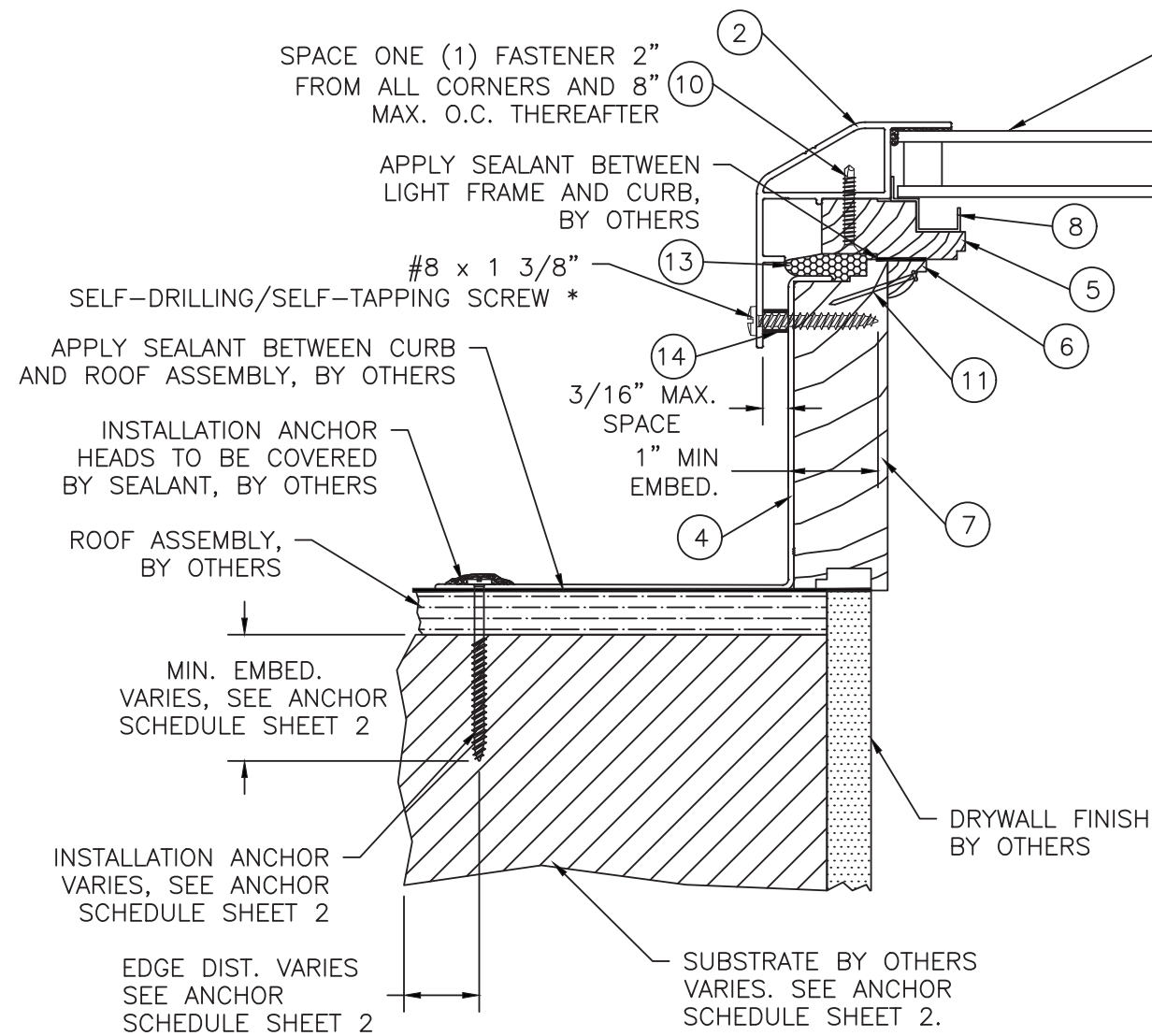
TITLE: MODEL "SFG4" CURB MOUNTED GLASS SKYLIGHT
NON-IMPACT
ELEVATION AND ANCHORING LAYOUT

PREPARED BY: PTC
DRAWN BY: TJH
DATE: 05/08/12
SCALE: N.T.S.
REV: D

PHONE: 321.690.1789
FAX: 321.690.1789
EMAIL: info@nltec-corp.com

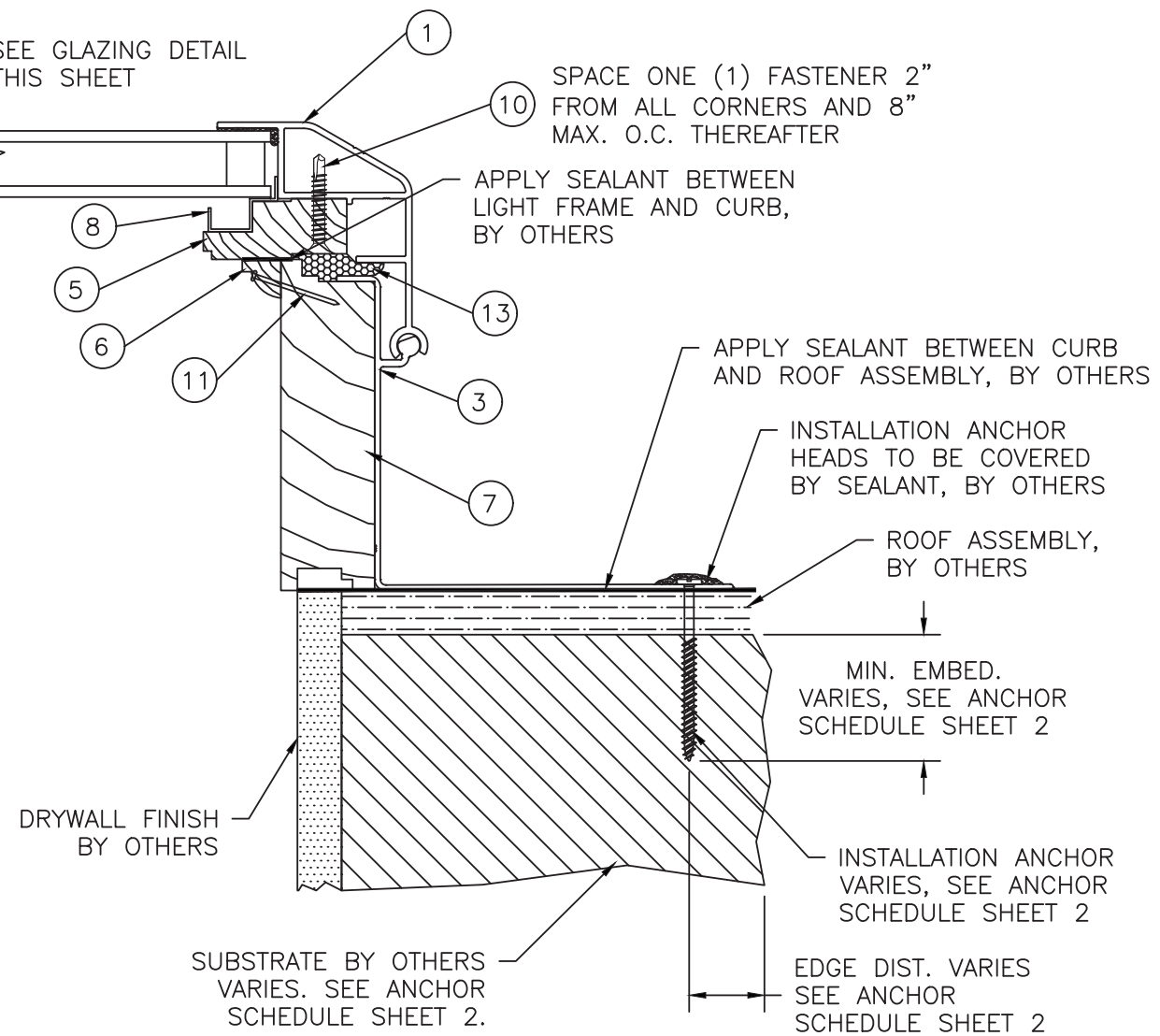
PROJECT NUMBER:	423-0504		
REV	DESCRIPTION	DATE	BY
D	Update to 8th Edition (2023) FBC	10/16/23	RJA
C	UPDATE CONDENSATION CHANNEL (ITEM NO. 8)	12/14/19	RJA
B	Update to 6th Edition (2017) FBC	12/6/17	RJA
A	Update to 5th Edition (2014) FBC	7/15/15	RJA

Robert J. Amoruso, P.E.
FL P.E. No. 49752

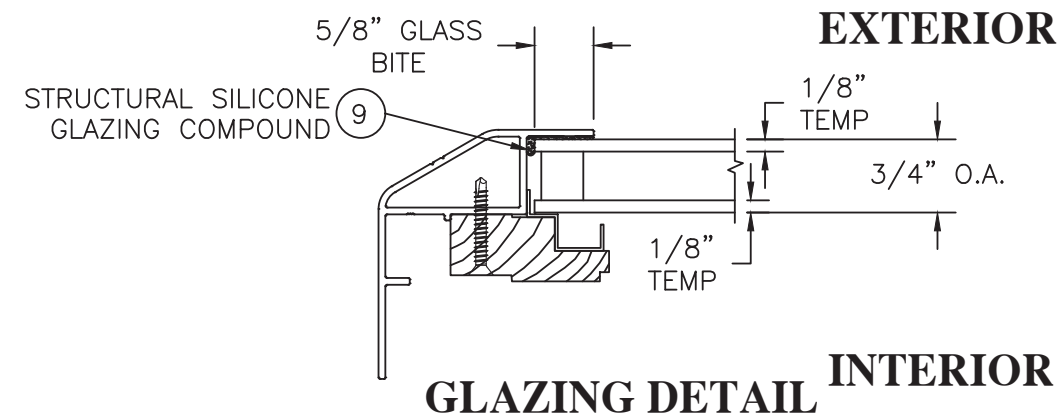


A INSTALLATION CROSS SECTION
4 NON-HINGE SIDE
 2X FRAMING, CONCRETE AND METAL FRAMING
 INSTALLATION DETAIL. SEE SHEET 2

*SEE ANCHOR SCHEDULE ON SHEET 2 FOR OTHER APPROVED TYPES



B INSTALLATION CROSS SECTION
4 HINGE SIDE
 2X FRAMING, CONCRETE AND METAL FRAMING
 INSTALLATION DETAIL. SEE SHEET 2



PROJECT NUMBER: 423-0504

		RJA	BY
D	Update to 8th Edition (2023) FBC	10/16/23	DATE
C	UPDATE CONDENSATION CHANNEL (ITEM NO. 8)	12/14/19	DATE
B	Update to 6th Edition (2017) FBC	12/6/17	DATE
A	Update to 5th Edition (2014) FBC	7/15/15	DATE
REV	DESCRIPTION		

NATURAL LIGHT ENERGY SYSTEMS, dba KENNEDY SKYLIGHTS
 5294 TOWER WAY
 SANFORD, FL 32773

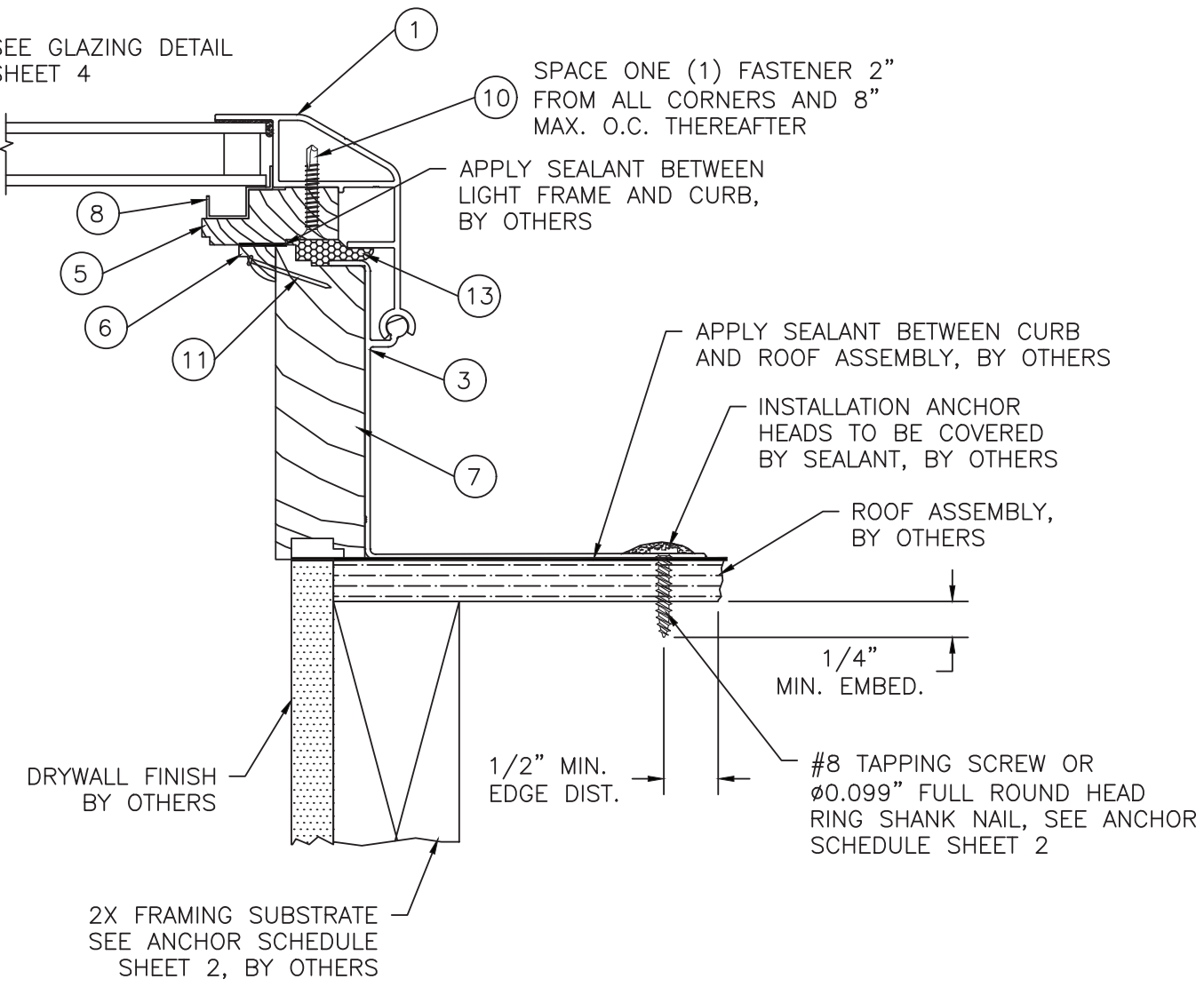
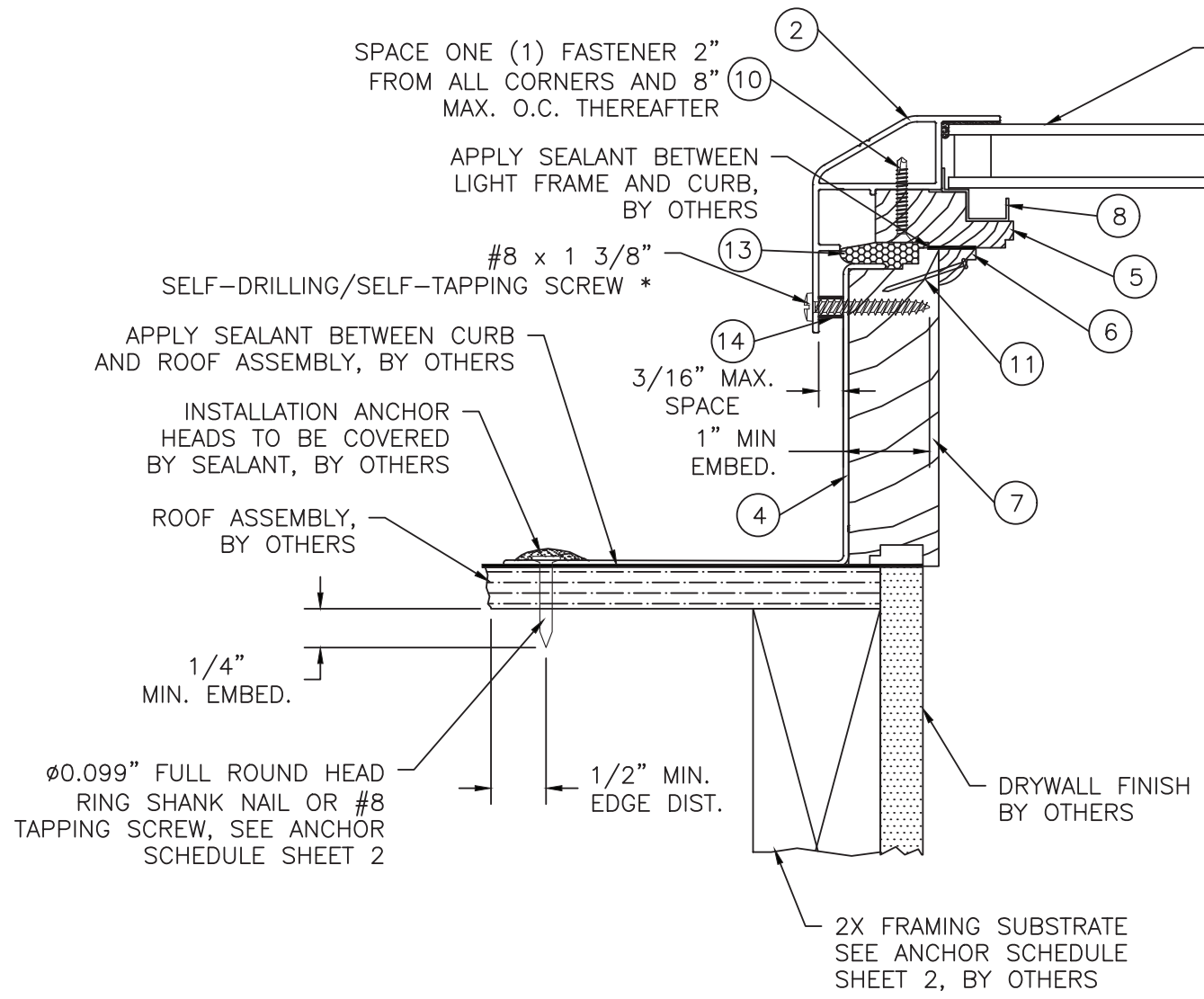
TITLE: MODEL "SFG4" CURB MOUNTED GLASS SKYLIGHT
 NON-IMPACT
 INSTALLATION SECTION W/SCREWS AND GLAZING DETAIL

DATE: 05/08/12
 DRAWING NO: KENN0005
 SHEET: 4 OF 6

DRAWN BY: TJH
 SCALE: N.T.S.
 REV: D

PREPARED BY: PTC PRODUCT DESIGN GROUP, LLC
 PO BOX 520776
 LONGWOOD, FLORIDA 32752
 Phone: 321.690.1789
 Fax: 321.690.1789
 Email: info@nlpsc-corp.com
 FBPE CA. NO. 23535

Robert J. Amoruso, P.E.
 FL P.E. No. 49752



C INSTALLATION CROSS SECTION
NON-HINGE SIDE

2X FRAMING INSTALLATION DETAIL
Ø0.148" RING SHANK NAIL SHOWN, #10 TAPPING SCREW ALSO APPROVED, SEE ANCHOR SCHEDULE SHEET 2

*SEE ANCHOR SCHEDULE ON SHEET 2 FOR OTHER APPROVED TYPES

D INSTALLATION CROSS SECTION
HINGE SIDE

2X FRAMING INSTALLATION DETAIL
#10 TAPPING SCREW SHOWN, Ø0.148" RING SHANK NAIL ALSO APPROVED, SEE ANCHOR SCHEDULE SHEET 2

PROJECT NUMBER: 423-0504

Update to 8th Edition (2023) FBC	RJA	10/16/23	RJA
UPDATE CONDENSATION CHANNEL (ITEM NO. 8)	RJA	12/14/19	RJA
Update to 6th Edition (2017) FBC	RJA	12/6/17	RJA
Update to 5th Edition (2014) FBC	RJA	7/15/15	RJA
REV	DESCRIPTION	DATE	BY

NATURAL LIGHT ENERGY SYSTEMS, dba KENNEDY SKYLIGHTS
5294 TOWER WAY
SANFORD, FL 32773

TITLE: MODEL "SFG4" CURB MOUNTED GLASS SKYLIGHT NON-IMPACT INSTALLATION SECTION WITH NAILS

DATE: 05/08/12
DRAWING NO: KENN0005
SHEET: 5 OF 6

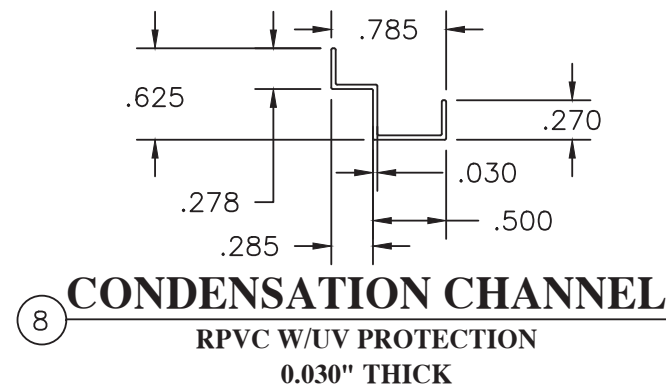
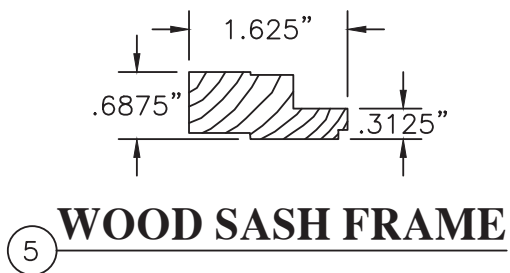
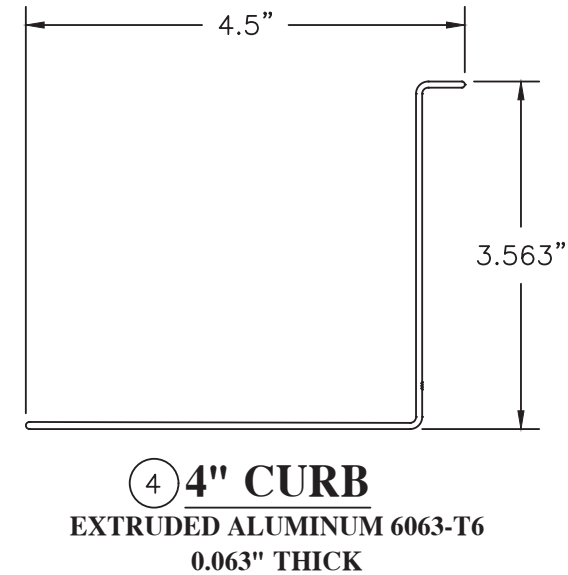
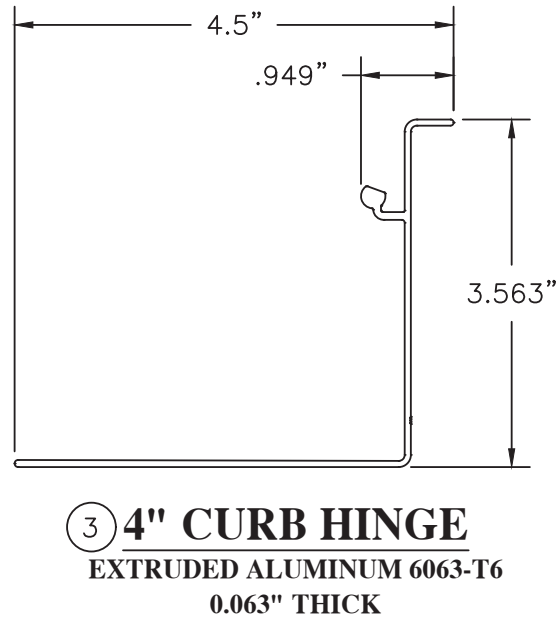
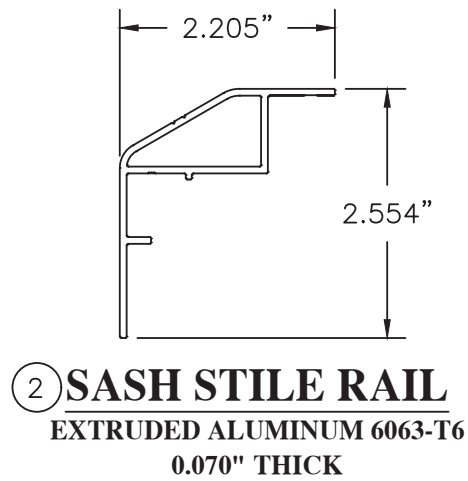
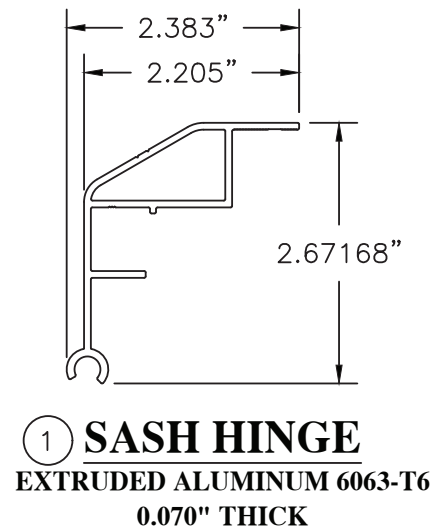
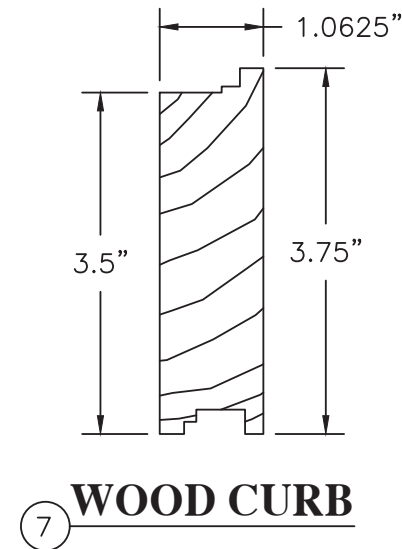
PREPARED BY: T.J.H.
SCALE: N.T.S.
REV: D

PTC PRODUCT DESIGN GROUP, LLC
PO BOX 520776
LONGWOOD, FLORIDA 32752
Phone: 321.690.1789
Fax: 321.690.1789
Email: info@ptc-corp.com
FBPE CA. NO. 23535

Robert J. Amoruso, P.E.
FL P.E. No. 49752

BILL OF MATERIALS

ITEM #	PART #	ITEM DESCRIPTION	MANUFACTURER	MATERIAL
1	FE4694	SASH HINGE	INDALEX ALUM. SOLUTIONS	ALUM. 6063-T6
2	FE4693	SASH STILE RAIL	INDALEX ALUM. SOLUTIONS	ALUM. 6063-T6
3	FE4695	4" CURB HINGE	INDALEX ALUM. SOLUTIONS	ALUM. 6063-T6
4	FE46700	4" CURB	INDALEX ALUM. SOLUTIONS	ALUM. 6063-T6
5	SM KS-5	WOOD SASH FRAME	NATURAL LIGHT ENERGY SYSTEMS, dba KENNEDY SKYLIGHTS	WOOD
6	SM KS-6	SASH STOP	NATURAL LIGHT ENERGY SYSTEMS, dba KENNEDY SKYLIGHTS	WOOD
7	SM KS-2	WOOD CURB	NATURAL LIGHT ENERGY SYSTEMS, dba KENNEDY SKYLIGHTS	WOOD
8	-----	CONDENSATION CHANNEL	OMEGA PLASTICS	RPVC W/UV PROTECTION
9		GLAZING COMPOUND	NOVAFLEX	STRUCTURAL SILICONE
10		#8 x 1 1/4" FH SELF-DRILLING SCREW		
11		16GA. x 1 1/8" BRAD NAIL		
12		NON-IMPACT GLAZING, SEE SHEET 4		
13		1" x 1 1/4" FOAM GASKET		EDPM FOAM
14		RIGID SPACER FOR SASH STILE RAIL INSTALLATION, SEE INSTALLATION NOTE 4 SHEET 2		RIGID



PROJECT NUMBER: 423-0504
 NATURAL LIGHT ENERGY SYSTEMS, dba KENNEDY SKYLIGHTS
 5294 TOWER WAY
 SANFORD, FL 32773
 TITLE: MODEL "SFG4" CURB MOUNTED GLASS SKYLIGHT NON-IMPACT
 BILL OF MATERIALS AND COMPONENTS
 PREPARED BY: TJH
 DATE: 05/08/12
 SCALE: N.T.S.
 DRAWING NO: KENN0005
 SHEET: 6 OF 6
 REV: D

Robert J. Amoruso, P.E.
 FL P.E. No. 49752

REV	DESCRIPTION	DATE	BY
D	Update to 8th Edition (2023) FBC	10/16/23	RJA
C	UPDATE CONDENSATION CHANNEL (ITEM NO. 8)	12/14/19	RJA
B	Update to 6th Edition (2017) FBC	12/6/17	RJA
A	Update to 5th Edition (2014) FBC	7/15/15	RJA